



# LASTAS A/S

Energivej 35 . DK-8722 Hedensted . Danmark  
Motorvej / Autobahn E45 . Afkørsel / Abfahrt 58

E-mail: [lastas@lastas.dk](mailto:lastas@lastas.dk)  
[www.lastas.dk](http://www.lastas.dk)

**Tel +45 72 19 80 00 • Fax +45 72 19 80 01**

## HRD 29 pl., City



Lastas Trucks Danmark A/S

Energivej 35  
8722 Hedensted

Sælger  
Lastas A/S  
[info@lastas.dk](mailto:info@lastas.dk)  
+45 72 19 80 00

### Registration

Year 2006

Reg. date 11-12-2006

Last inspection 20-03-2024

Chassis no.  
W09NTS2367EN10020

Ref. no. 1N10020

### Chassis

Wheelbase 7900 mm

### Brakes

Drum brakes

### Weight

Loading 28000 kg

Total weight 36000 kg

Net weight 8000 kg

### Dimensions

Internal height 2490 mm

Internal width 2430 mm

Internal length 11980 mm

### City

Revolving axel

### Tyres

Dimensions 1aks. 275/70 R 22.5

% Back 1aks. 30%

% Back 2aks. 30%

Dimensions 2aks. 275/70 R 22.5

### Suspension

Aksel 1, air

Aksel 2, air

### Basis

Type Semi-Trailers

Aksel 2

Stand Fine

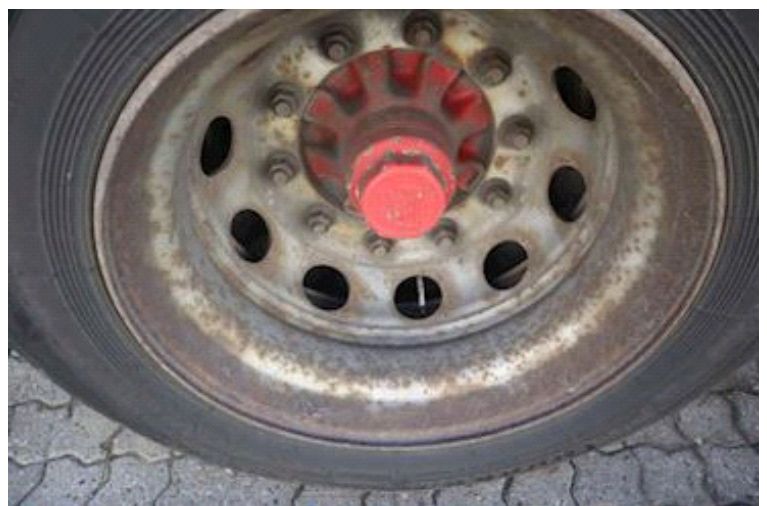
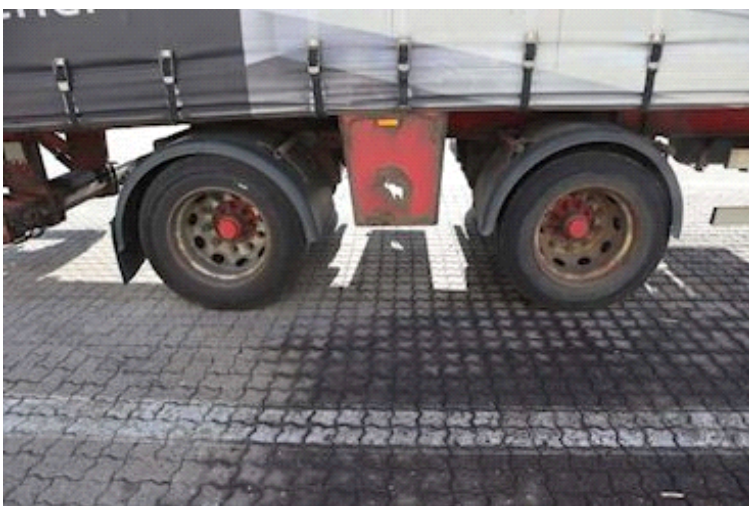


# LASTAS A/S

Energivej 35 . DK-8722 Hedensted . Danmark  
Motorvej / Autobahn E45 . Afkørsel / Abfahrt 58

E-mail: [lastas@lastas.dk](mailto:lastas@lastas.dk)  
[www.lastas.dk](http://www.lastas.dk)

Tel +45 72 19 80 00 • Fax +45 72 19 80 01







# LASTAS A/S

Energivej 35 . DK-8722 Hedensted . Danmark  
Motorvej / Autobahn E45 . Afkørsel / Abfahrt 58

E-mail: [lastas@lastas.dk](mailto:lastas@lastas.dk)  
[www.lastas.dk](http://www.lastas.dk)

**Tel +45 72 19 80 00 • Fax +45 72 19 80 01**

